

## Frequently Asked Questions

**Q.** My pickup is strictly a passenger vehicle. Do I have to park it in my garage overnight?

**A.** No, passenger vehicles with no commercial markings or equipment may park in residential driveways or on streets.

**Q.** I use my "B" plated vehicle for both a commercial and non-commercial use. May I park it on the street in front of my house during the evening hours?

**A.** If your vehicle has commercial markings (for instance a company name and phone number), you may not park on a residential street or driveway.

**Q.** If I do not have a garage, may I park my commercial vehicle in my driveway?

**A.** No, you will need to make arrangements to park your vehicle elsewhere.

**Q.** My pickup truck has a plow attached to the front, and a small storage chest in the bed during the winter season only. Does this prohibit me from parking on a residential property or street?

**A.** Yes, when a plow or other auxiliary equipment is placed on a vehicle, it may not be parked on a residential street or driveway.

**Q.** My panel van has rear seating and both rear and side windows, may I park it in front of my house?

**A.** Yes, vehicles with rear seating, a rear window and side windows located adjacent to the rear passenger seats and no commercial markings may park on residential streets and driveways.

## About This Guide

For detailed information on parking regulations including truck parking please visit [www.skokie.org](http://www.skokie.org) and review the Village Code section of the web site or contact the Traffic Engineering Division at 847/933-8231.

Visit our web site at:  
[www.skokie.org](http://www.skokie.org)

Copyright 2014



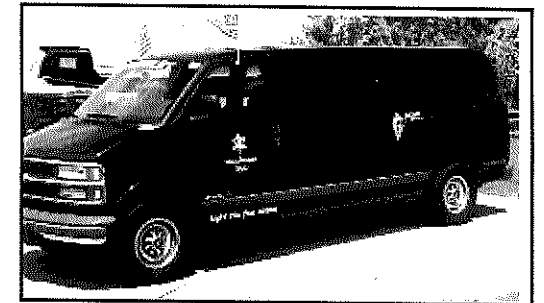
*Mayor*  
George Van Dusen  
*Village Clerk*  
Pramod C. Shah

*Trustees*  
Michele L. Bromberg  
Karen Gray-Keeler  
Ralph Klein  
Randall E. Roberts  
Edie Sue Sutker  
Ilonka Ulrich

*Village Manager*  
John T. Lockerby  
*Corporate Counsel*  
Michael M. Lorge  
*Chief of Police*  
Anthony Scarpelli

The Village of Skokie

## Truck, Cargo and Panel Vans Parking Regulations



**Community Development  
Department  
5127 Oakton Street  
Skokie, Illinois 60077**

**847/933-8446**

**[www.skokie.org](http://www.skokie.org)**

## Truck Parking

The State of Illinois issues "B" plates to trucks, vans and recreational vehicles up to 8,000 pounds. Recreational vehicles or trailers such as campers, camper vans, motor homes and similar vehicles are issued either "RV" or "RT" plates. Passenger car license plates are issued to cars and vans with a seating capacity of up to 19 people.

In May 2002, the Village Board approved an ordinance allowing the parking of non-commercial vehicles with a "B" license plate on residential streets and driveways in Skokie. This ordinance was placed into effect after a long ban on the parking of such vehicles in residential neighborhoods.

### Pickup Trucks & Vans as Passenger Vehicles

The use of pickup trucks and vans as passenger vehicles has increased in popularity, and the design of many of the newer models has incorporated elements that focus more on passenger use. These new elements include smaller overall size, longer cabs to accommodate more passengers and shorter beds.

In an effort to address the concerns of residents who utilize pickup trucks as passenger vehicles, the Village Code was changed to permit the parking of non-commercial vehicles on driveways and residential streets.

### Guiding Regulations

The revised ordinance permits the parking of non-commercial pickup trucks and vans outside of a garage on residential lots and on residential streets as long as they comply with the following specific regulations:

- Class B or passenger plates only;
- Single rear wheels only;
- No signs, advertisements, business identifications or business license plates;
- No attached auxiliary equipment including, but not limited to, plows, equipment racks, storage boxes or lockers;
- No debris, construction materials or equipment intended for commercial or business use, whether in the open or covered by removable material or fabric, is permitted;
- No boat, boat trailer, or recreational vehicle shall be permitted to park, stand or load in any residential street except with the prior approval of the Skokie Police Department. This temporary approval shall be granted for loading or unloading purposes only, and shall specify the date and time of its applicability;
- Cargo and panel vans with rear windows and seating behind the driver's seat (note: rear seating area needs side windows adjacent to the rear seating area) are also allowed by the new regulations;
- All motor vehicles must be parked on an approved (pursuant to Village Code and Zoning and Building regulations) driveway or parking space.

Any pickup truck or van that does not meet all of the above requirements may not be parked in the open in a residential area.

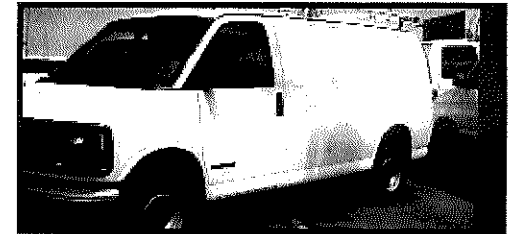
### Additional Reminder

Passenger vehicles used as commercial vehicles may not be parked in a residential area.

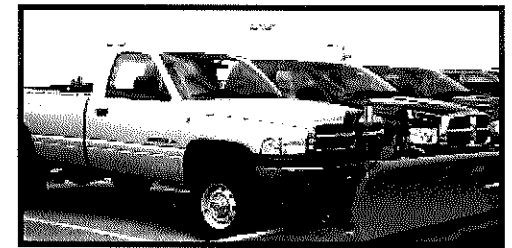
## Permitted Parking Areas

Non-commercial vehicles may park on a residential street, on a residential driveway in the front or side yards (if the driveway leads to a car port, garage or approved parking pad), or in the residential rear yard on an Village-approved parking pad.

Commercial vehicles in residential areas must be parked in an enclosed garage.



*Must be parked in an enclosed area.*



*Must be parked in an enclosed area.*



*May be parked on a residential driveway or street.*